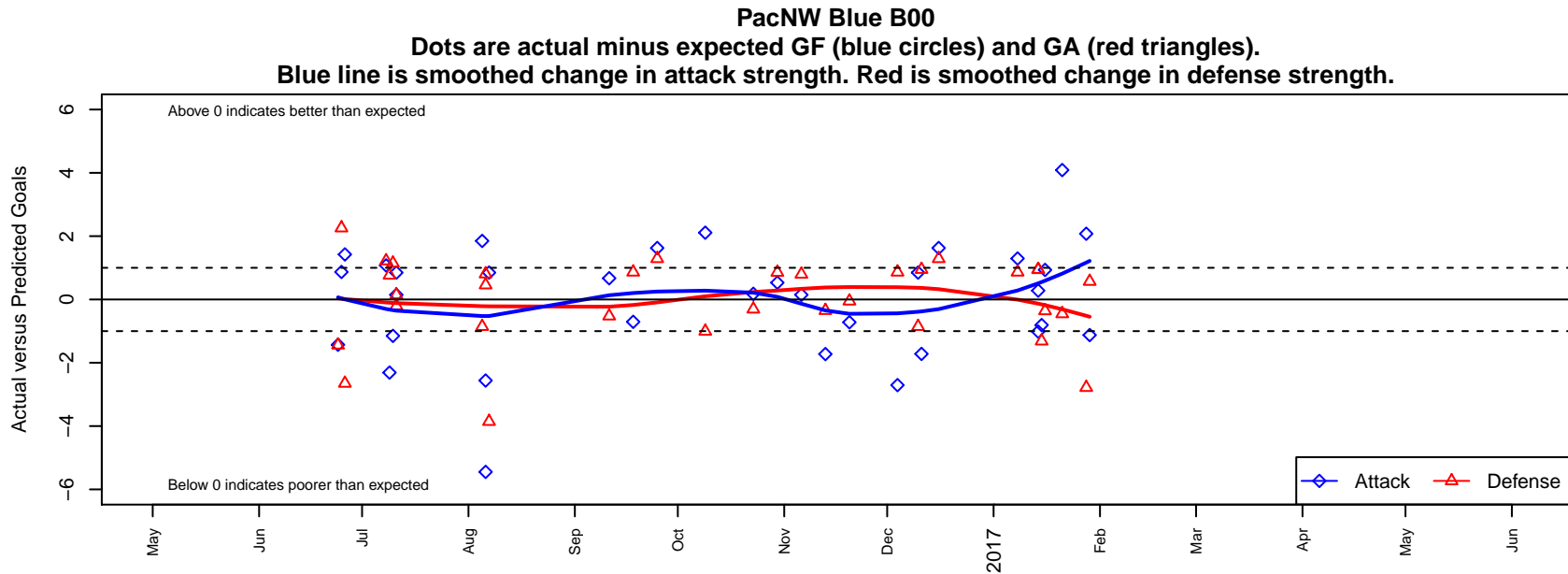


PacNW Blue B00

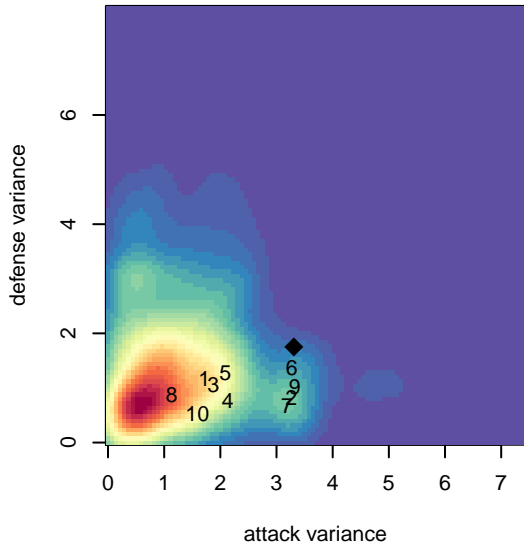
Pacific Northwest SC
 Tukwila, WA
 B00 total strength=1636
 attack=25.4 defense=12.94
 fall league = RCL B00 Div 3

alt names used:
 PACNW 00 BLUE (WA)
 PacNW 00 Blue
 PacNW B00 Blue B
 PACNW 00 BLUE (WA)
 PacNW B00 Blue B
 PacNW B00 Blue

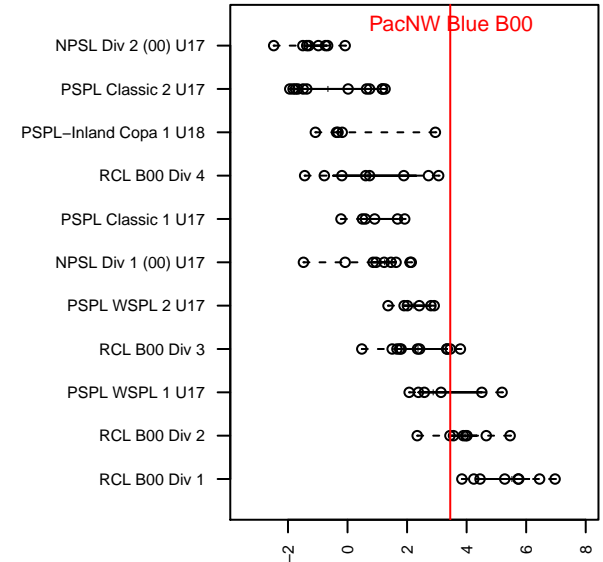
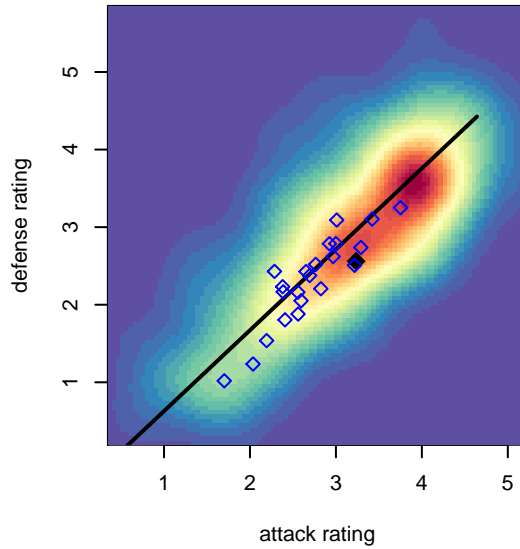
Venues played:
 2016 Rainier Challenge Samba U17
 2016 Nike Crossfire Challenge Silver Group U1
 2016 WA Rush Cup B00 Silver U17
 2016 RCL B00 Div 3
 2016 WYS Presidents Cup B00
 2016 PacNW Winter Classic Premier U17



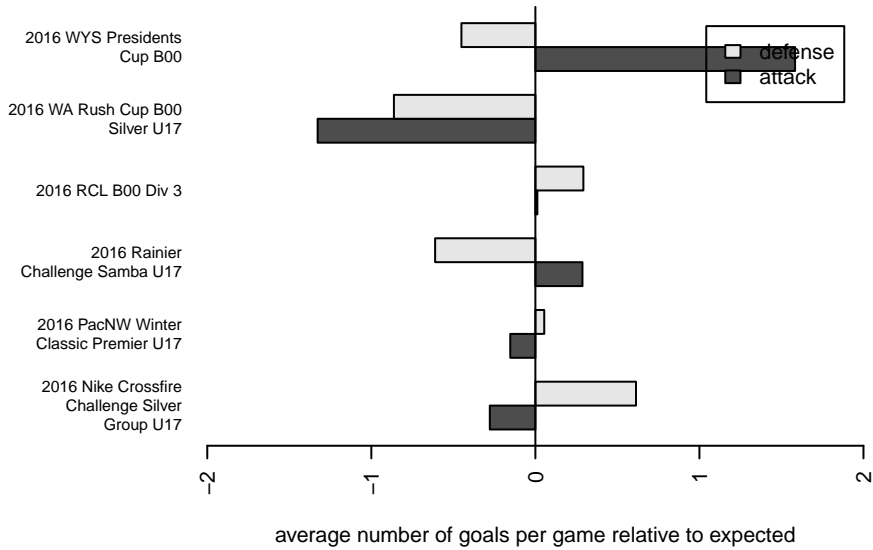
**attack and defense variance (black dot)
relative to other teams
and top 10 in region**



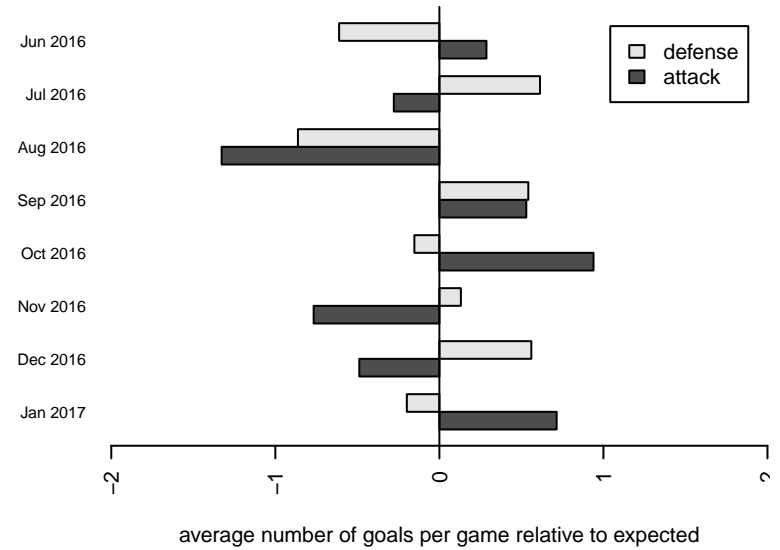
**attack and defense rating
relative to others at age
and all opponents in last 13 months**



Performance relative to 13 month average



Performance relative to 13 month average



| date | home | | away | | venue | pred.home | pred.away |
|-------------|----------------------------|---|-----------------------------|----|--|------------------|------------------|
| 2017-01-29 | Kitsap Alliance FC Red B00 | 1 | PacNW Blue B00 | 0 | 2016 WYS Presidents Cup B00 | 1.57 | 1.12 |
| 2017-01-28 | PacNW Blue B00 | 4 | Crossfire Select Button B00 | 4 | 2016 WYS Presidents Cup B00 | 1.92 | 1.22 |
| 2017-01-21 | Whatcom Rangers Blue B00 | 1 | PacNW Blue B00 | 10 | 2016 WYS Presidents Cup B00 | 0.55 | 5.91 |
| 2017-01-16 | PacNW Blue B00 | 2 | Central WA SA Navy B00 | 4 | 2016 PacNW Winter Classic Premier U17 | 1.07 | 3.64 |
| 2017-01-15 | ETFC Rovers Black B00 | 3 | PacNW Blue B00 | 1 | 2016 PacNW Winter Classic Premier U17 | 1.68 | 1.81 |
| 2017-01-14 | PacNW Blue B00 | 2 | Blackhills FC Black B00 | 1 | 2016 PacNW Winter Classic Premier U17 | 1.72 | 1.95 |
| 2017-01-14 | ISC Gunners A B00 | 0 | PacNW Blue B00 | 2 | 2016 PacNW Winter Classic Premier U17 | 0.94 | 3.02 |
| 2017-01-08 | PacNW Blue B00 | 4 | Crossfire Premier C B00 | 0 | 2016 WYS Presidents Cup B00 | 2.71 | 0.86 |
| 2016-12-16 | PacNW Blue B00 | 4 | NW United Black B00 | 0 | 2016 RCL B00 Div 3 | 2.37 | 1.29 |
| 2016-12-11 | PacNW Blue B00 | 0 | Blackhills FC Black B00 | 1 | 2016 RCL B00 Div 3 | 1.72 | 1.95 |
| 2016-12-10 | PacNW Blue B00 | 3 | WPFC Navy B00 | 2 | 2016 RCL B00 Div 3 | 2.15 | 1.14 |
| 2016-12-04 | Crossfire Premier C B00 | 0 | PacNW Blue B00 | 0 | 2016 RCL B00 Div 3 | 0.86 | 2.71 |
| 2016-11-20 | Blackhills FC Black B00 | 2 | PacNW Blue B00 | 1 | 2016 RCL B00 Div 3 | 1.95 | 1.72 |
| 2016-11-13 | PacNW Blue B00 | 4 | GS Surf C B00 | 1 | 2016 RCL B00 Div 3 | 5.73 | 0.65 |
| 2016-11-06 | Slammers Orange B00 | 0 | PacNW Blue B00 | 3 | 2016 RCL B00 Div 3 | 0.80 | 2.85 |
| 2016-10-30 | PacNW Blue B00 | 4 | Eastside FC Blue B00 | 0 | 2016 RCL B00 Div 3 | 3.47 | 0.86 |
| 2016-10-23 | Whatcom Rangers Gold B00 | 2 | PacNW Blue B00 | 2 | 2016 RCL B00 Div 3 | 1.69 | 1.82 |
| 2016-10-09 | Seattle United Samba B00 | 2 | PacNW Blue B00 | 5 | 2016 RCL B00 Div 3 | 0.99 | 2.89 |
| 2016-09-25 | NW United Black B00 | 0 | PacNW Blue B00 | 4 | 2016 RCL B00 Div 3 | 1.29 | 2.37 |
| 2016-09-18 | PacNW Blue B00 | 2 | Crossfire Premier C B00 | 0 | 2016 RCL B00 Div 3 | 2.71 | 0.86 |
| 2016-09-11 | Kent United Green B00 | 2 | PacNW Blue B00 | 2 | 2016 RCL B00 Div 3 | 1.48 | 1.33 |
| 2016-08-07 | PacNW Blue B00 | 3 | WPFC Navy B00 | 5 | 2016 WA Rush Cup B00 Silver U17 | 2.15 | 1.14 |
| 2016-08-06 | PacNW Blue B00 | 3 | PSA Force Black B00 | 0 | 2016 WA Rush Cup B00 Silver U17 | 8.45 | 0.46 |
| 2016-08-06 | PacNW Blue B00 | 1 | FC Edmonds Fury B00 | 0 | 2016 WA Rush Cup B00 Silver U17 | 3.56 | 0.80 |
| 2016-08-05 | PacNW Blue B00 | 4 | WPFC Navy B00 | 2 | 2016 WA Rush Cup B00 Silver U17 | 2.15 | 1.14 |
| 2016-07-11 | Slammers Orange B00 | 1 | PacNW Blue B00 | 3 | 2016 Nike Crossfire Challenge Silver Gro | 0.80 | 2.85 |
| 2016-07-11 | WPFC Navy B00 | 1 | PacNW Blue B00 | 3 | 2016 Nike Crossfire Challenge Silver Gro | 1.14 | 2.15 |
| 2016-07-10 | WPFC Navy B00 | 0 | PacNW Blue B00 | 1 | 2016 Nike Crossfire Challenge Silver Gro | 1.14 | 2.15 |

| date | home | | away | | venue | pred.home | pred.away |
|-------------|----------------------|---|-----------------------------|---|--|------------------|------------------|
| 2016-07-09 | PacNW Blue B00 | 0 | Harbor Premier Green B00 | 0 | 2016 Nike Crossfire Challenge Silver Gro | 2.31 | 0.76 |
| 2016-07-08 | PacNW Blue B00 | 3 | Crossfire Select Button B00 | 0 | 2016 Nike Crossfire Challenge Silver Gro | 1.92 | 1.22 |
| 2016-06-26 | NPSA Titans Navy B00 | 4 | PacNW Blue B00 | 4 | 2016 Rainier Challenge Samba U17 | 1.35 | 2.58 |
| 2016-06-25 | FPSC Fury Black B00 | 0 | PacNW Blue B00 | 2 | 2016 Rainier Challenge Samba U17 | 2.26 | 1.13 |
| 2016-06-24 | PacNW Blue B00 | 0 | WPFC White B00 | 3 | 2016 Rainier Challenge Samba U17 | 1.43 | 1.56 |